



Your SoloStar® injection in 6 steps

1. Check pen
2. Attach needle
3. Perform a safety test
4. Select dose
5. Inject dose
6. Remove needle

SoloStar® 

You can also find further information
on the Internet at diabetes.sanofi.de

Your Diabetes Service Centre

0800 52 52 010

(toll-free from the German landline
and mobile network)

servicecenter-diabetes@sanofi.com



Pen Guide

SoloStar® 300 units/ml

SoloStar® 

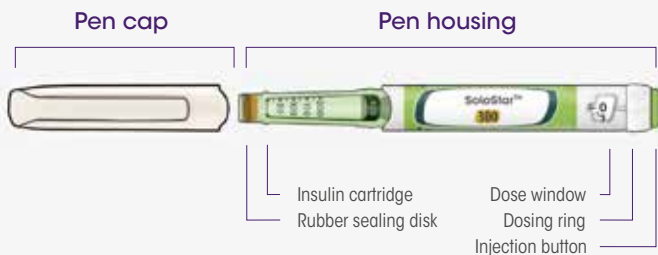
sanofi

SoloStar®

Pen Guide

This is a short user guide for SoloStar® 300 units/ml.

Please comply with the instructions for use included with every SoloStar® 300 units/ml pack.



The cartridge is **not** interchangeable.

SoloStar® 

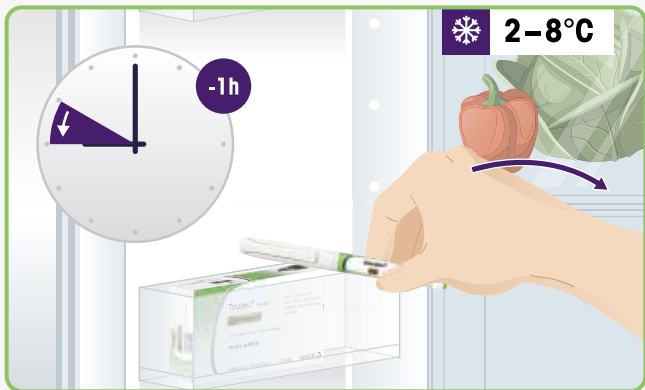
STEP 1:

Check your pen

Take a **new** pen out of the refrigerator at least one hour before your injection. It is more painful to inject cold insulin.

Check the name and the expiry date on the label of your pen.

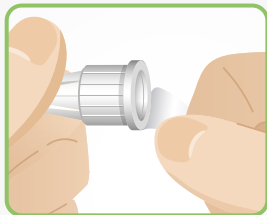
- Make sure that you have the correct insulin.
- Do not use your pen after the expiry date has passed.
- Do not use the pen if the insulin is cloudy or coloured or contains particles.



STEP 2:

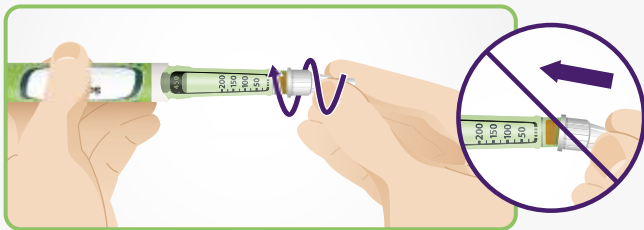
Attach a new needle

Take a new needle and remove the protective foil. Hold the needle straight and screw it onto the pen until it is tight. Do not overtighten the screw thread.



Use a new sterile needle for each injection. This helps to prevent blocked needles, as well as contamination and infections.

Remove the outer protective needle cap and keep it for later. Pull off the inner needle cap and dispose of it.



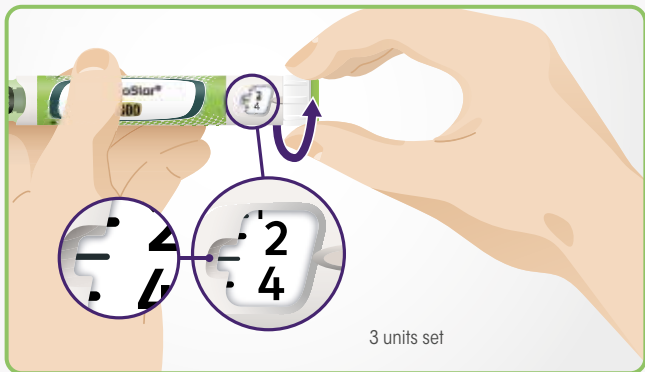
STEP 3:

Perform a safety test

Perform a safety test before each injection - this means:

- Check that your pen and the needle are working properly.
- Ensure that you are receiving the correct insulin dose.

Select a dose of 3 units by turning the dosing ring until the dose pointer lines up with the marker between "2" and "4".

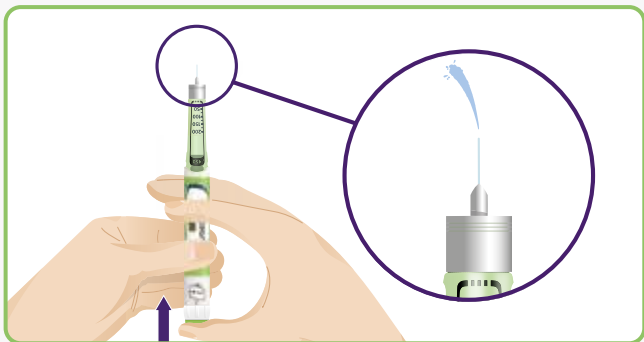


Press the injection button all the way in.

If insulin comes out of the needle tip, then the pen is working properly.

If no insulin comes out:

- You may need to repeat this step up to three times until insulin comes out.
- If no insulin comes out after the third repetition, it is possible that the needle is blocked. In this case
 - change the needle.
 - then repeat the safety test.



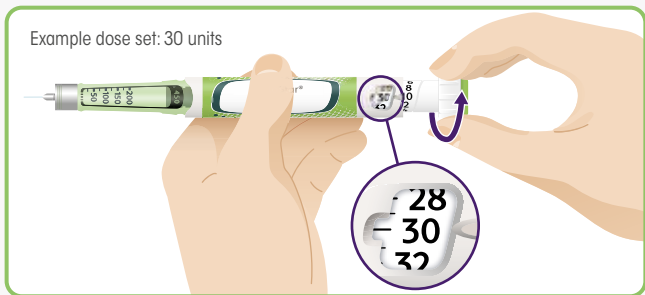
STEP 4:

Select the dose

Make sure that a needle is attached and that the dose window shows "0".

Turn the dosing ring until the dose pointer lines up with the desired dose.

- If you have turned past your dose, you can turn the dosing ring back down.
- You cannot turn the dosing ring beyond the number of units that are remaining in your pen.
- If you cannot select your full prescribed dose, either administer the dose in two injections or use a new pen.



STEP 5:

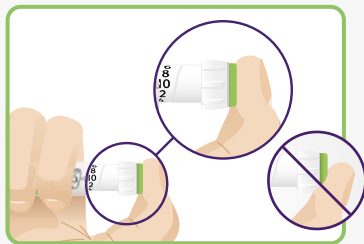
Inject your dose

Push the needle into your skin, as shown to you by your doctor, pharmacist or nurse.

When doing this, do not touch the injection button yet.



Place your thumb on the injection button. Then push the injection button all the way in and hold it down.

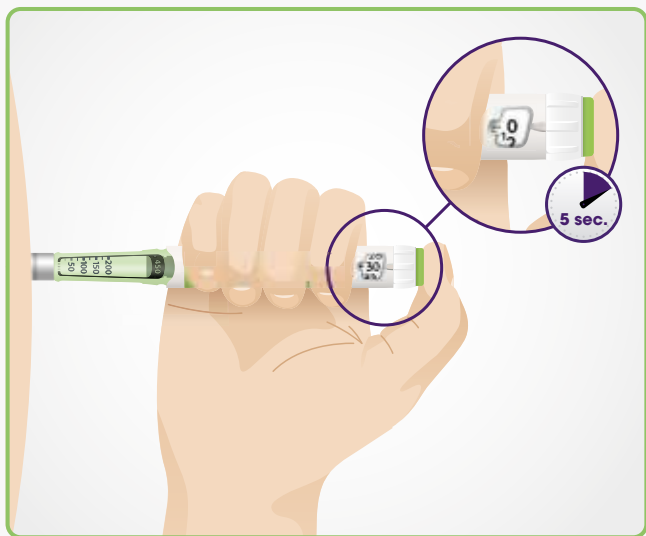


Push very straight - otherwise your thumb might block the dosing ring.

Hold the injection button down and, when you see "0" in the dose window, slowly count to 5.

This ensures that you are injecting the full dose.

Let go of the injection button once you have slowly counted to 5 with the injection button held down. Remove the needle from your skin.



STEP 6:

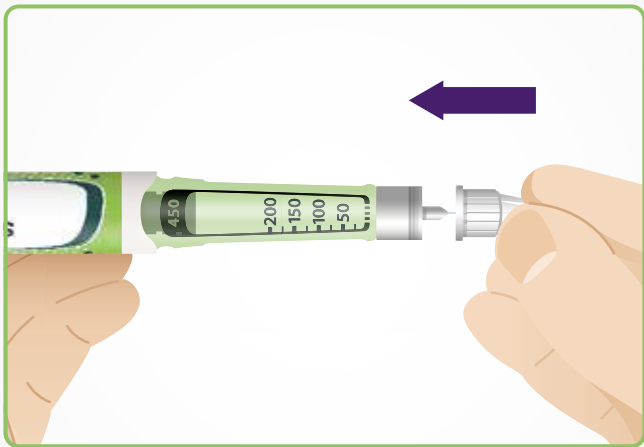
Remove the needle

Re-attach the outer protective needle cap to the needle and use it to unscrew the needle from the pen. Safely dispose of the needle.

Re-attach the pen cap.

Do not put the pen back into the refrigerator.

Store your pen at room temperature, **below 30°C**. Do not use the pen for longer than 6 weeks after the first use.



Needles for SoloStar® 300 units/ml

Only use needles that are suitable for use with SoloStar®
300 units/ml, e.g.:

- Becton Dickinson and Company (BD)
- Ypsomed
- Artsana
- Owen Mumford

SoloStar® 